

Get started with your ProPresenter Template

USER GUIDE



Get started with your ProPresenter template

This user guide walks through every key feature of your downloaded ProPresenter template and what steps you need to take in order to get started.

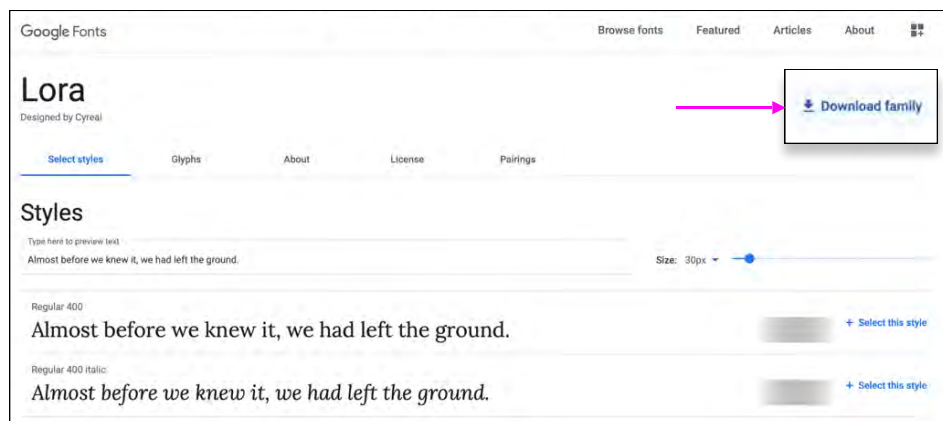
01

Install the free fonts used in ProPresenter Templates

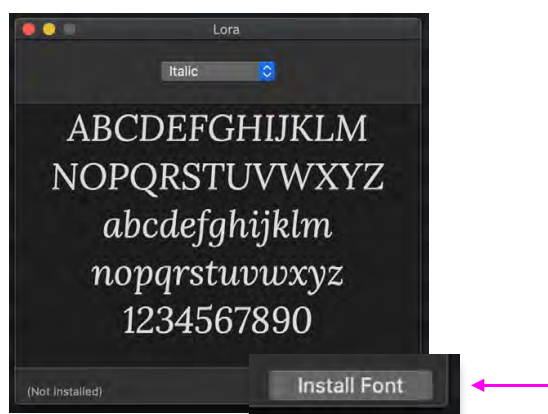
Our ProPresenter templates offer 4 font options: **Arial**, **Lora**, **Montserrat**, and **Oswald**. These fonts are completely free Google fonts and available for installation on Mac or Windows computers.

If these fonts are not installed on your ProPresenter device:

- Open your ProPresenter download folder, and double click on the Internet links for each font
- Click “Download Family” on the page on fonts.google.com



- Once the font .tff files are downloaded, double click on each file and press “Install Font.” Once this has been done, any ProPresenter template imported with these fonts chosen will automatically import in the correct font.



Get started with your ProPresenter template

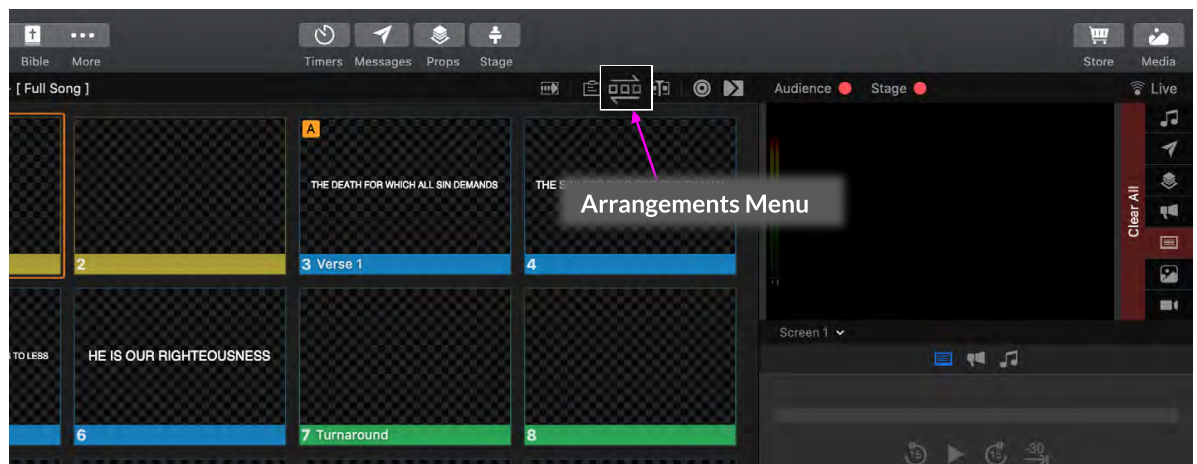
02

Import your ProPresenter template into ProPresenter 6 or 7.

Our templates are fully compatible with either ProPresenter 6 or 7. Simply drag your file into any ProPresenter playlist or the library, and your file will be automatically imported.

03

Choose the correct Slide Arrangement



Every ProPresenter template comes with two built-in slide arrangements:

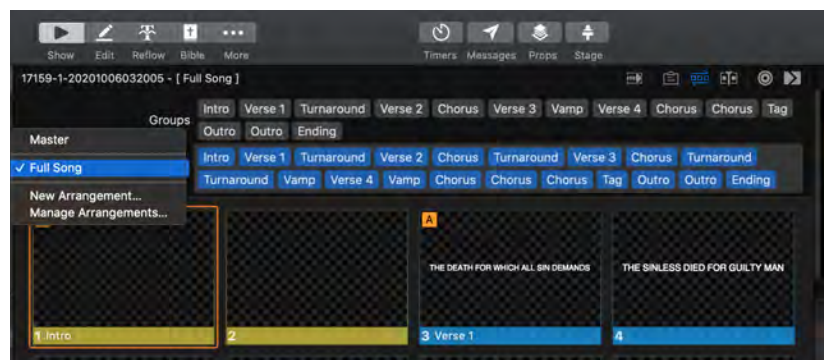
1. **Production Cues/Master Arrangement (selected by default):** This slide arrangement is for automated use with our pre-built MIDI Cues that keep ProPresenter template in perfect sync with the tracks in Playback.

The Master Slide Arrangement must be selected for successful use with Production Cues.

2. **Full Song:** This song arrangement is for manual lyric operation, when your production team plans on changing slides manually during worship.

How to Switch arrangements:

- With a ProPresenter template selected, click the "Arrangement Menu" icon to expand the arrangement selection area. Tap on the to the left, where you can then choose between the Master and Full Song arrangements. The slide number and order will automatically switch to reflect the arrangement choice.



FAQs and Resources

Your ProPresenter Template is now ready to get started!

Still got questions? Check out the FAQs below and additional resources.



Can I customize my ProPresenter template once I download it?

Yes! You can add graphics and backgrounds, make changes to your stage display layout, and more. We provide the template, you make it your own.



How do I control my ProPresenter template automatically with Playback?

Find in-detail tutorials on how MIDI Cues work, how to build them to correspond with your ProPresenter file, and more at www.multitracks.com/midiout.



Where do I find the pre-built MIDI Cues to control my templates?

Programming MIDI Cues to control ProPresenter slides is tedious work, which is why we've done it for you. Production Cues have been pre-built to work with a growing number of ProPresenter templates and unlocked with a Cloud Pro Plus subscription. Check out www.multitracks.com/cloudpro to learn more.



Can I download another template for this song with different customizations?

Yes! Each ProPresenter template purchase comes with unlimited downloads. Try another lines-per-slide format, different stage display chord types, and more.



Should I edit the slides while using Production Cues?

No - Production Cues are built to perfectly match the downloaded slides, so deleting or adding an extra slide would cause every following ProPresenter cue to be incorrect.

Encountering a slide error? Please let us know at www.multitracks.com/support and we will make the correction as soon as possible.

More Helpful Links

Visit www.multitracks.com/propresenter to discover more of what you can do with your templates.

Reach out at www.multitracks.com/support if you have any other questions.